



SUTHU CONSULTING
& SKILLS DEVELOPMENT

Company Profile

**Make the right decision to
reach your goals**

Our priority is excellence through efficient,
exhilarating training and development.



Welcome To SCASD

Suthu Consulting and Skills Development is a leading training consultation company dedicated to delivering high-quality, customized learning solutions to organizations across diverse industries. With a team of experienced consultants and a proven track record of success, we are committed to helping our clients achieve their business objectives through strategic training and development initiatives.

Suthu Consulting and Skills Development places emphasis on education, new opportunities, skills and training in the different Industry Sectors. Suthu Consulting and Skills Development is committed to pushing back the frontiers of poverty and equipping people with knowledge.



Floyd Nzimande
Floyd Nzimande
Managing Director



Our superior training and level of service has assisted in the development of an extensive list of satisfied and loyal clients.

Page of Content

Our Mission	04
Our Operational Objectives	04
Our Core Values	05
Our Commitment	06
Our Team	06
Our Approach	07
Our Services	07
Corporate Social Responsibility	08
Clientele	09



SUTHU CONSULTING
& SKILLS DEVELOPMENT



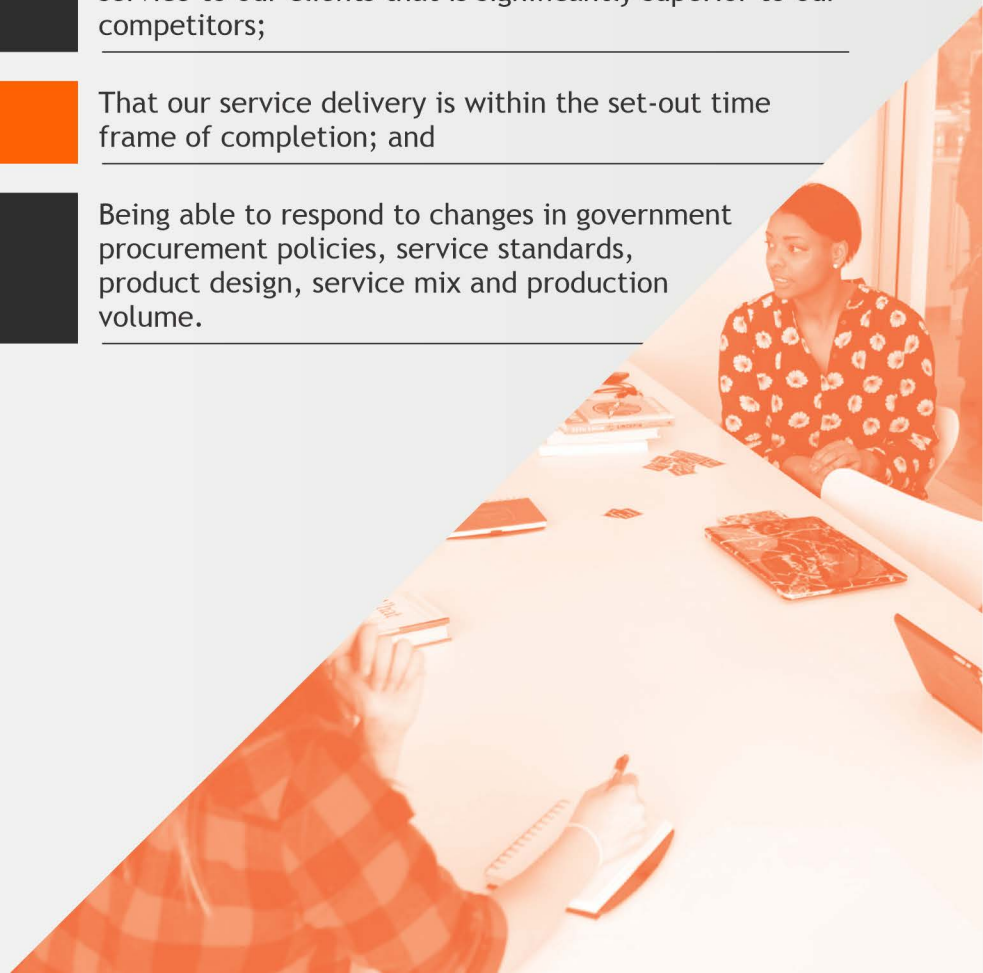
Our **Mission**

Our mission is to empower organizations by providing innovative, tailored training solutions that enhance employee skills, productivity, and overall performance. We aim to be the partner of choice for companies seeking to invest in their human capital and achieve sustainable growth.

Our **Operational Objectives**

Four Performance indicators guide the way we do business:

Cost Efficiency	We have ensured that our capital, staffing and other operating costs are kept low relative to our competitors;
Quality	We consistently strive to provide a high level of quality service to our clients that is significantly superior to our competitors;
Dependability	That our service delivery is within the set-out time frame of completion; and
Flexibility	Being able to respond to changes in government procurement policies, service standards, product design, service mix and production volume.





Our Core Values

The values on which we build our company around are as follows:

- ✦ Efficient and Reliable;
- ✦ Professionalism in business practice;
- ✦ Quality Services;
- ✦ Customer Focused;
- ✦ Community Participation;
- ✦ Skills Development / Training; and
- ✦ Gender Equality



Our Commitment

To achieve your desired results, our development effort extends beyond the training room. We work in partnership with you to:

- Understand your business and development needs;
- Design development initiatives and deliver high impact training interventions;
- Develop and implement powerful reinforcement programs; and
- Track and measure for continuous improvement and sustainability.

Our Team

Our team comprises experienced trainers, instructional designers, subject matter experts and consultants with a strong blend of industry knowledge and training expertise. We are dedicated to staying ahead of industry trends and best practices to deliver cutting-edge solutions to our clients.





Our Approach

At Suthu Consulting and Skills Development, we believe in a collaborative and consultative approach. We work closely with our clients to understand their unique challenges, culture and goals, ensuring that our training solutions align with their strategic vision and business objectives.



Our Services

Training Needs Analysis

We conduct comprehensive assessments to identify the specific learning needs and performance gaps within an organization;

Customized Training Programs

We design and deliver bespoke training programs tailored to the unique requirements of our clients, covering areas such as leadership development, technical skills, soft skills and more;

Instructional Design

Our team creates engaging and effective learning materials, including e-learning modules, training manuals and multimedia content;

Training Delivery

We offer various delivery formats, including instructor-led training, virtual classrooms and blended learning approaches to ensure maximum impact and flexibility; and

Evaluation and Impact Assessment

We provide post-training evaluations and assessments to measure the effectiveness of our programs and their impact on organizational performance.

Corporate Social Responsibility



Suthu Consulting and Skills Development acknowledges that the companies do not operate in a vacuum but that its actions and decisions impact on its immediate communities, society in general and the environment. For Suthu Consulting and Skills Development, corporate social responsibility is not merely an aspect of good governance, but a primary consideration in decision-making, from policy-development to each individual staff member's actions on the ground.

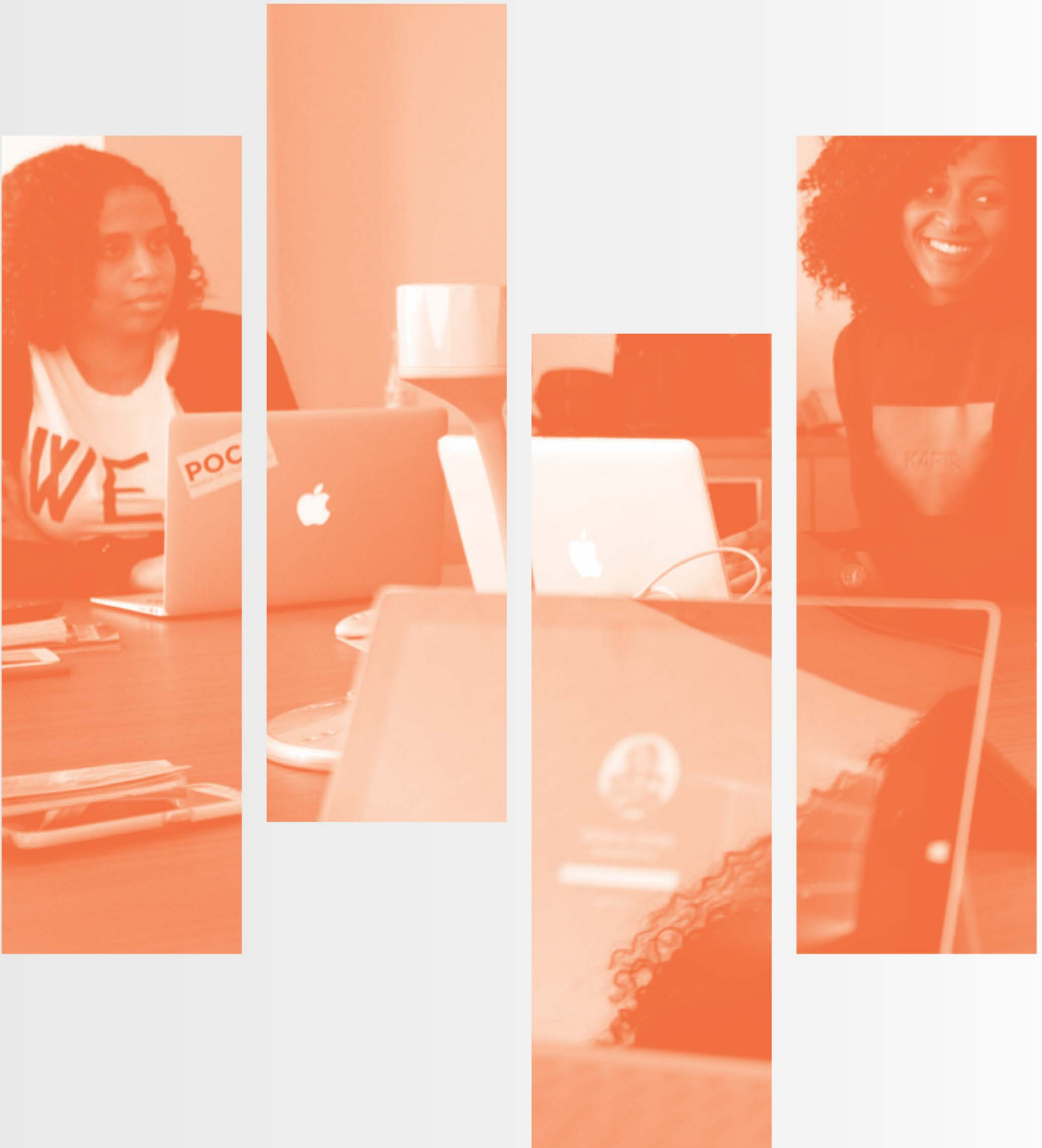
As part of this innovative approach, Suthu Consulting and Skills Development Educational Trust is being established. The Suthu Consulting and Skills Development Educational Trust is aiming to raise funds for various outreach organizations across South Africa. In addition, Suthu Consulting and Skills Development is focused on being a valuable contributor in building a better future for all South Africans. Actions include, but are not limited to, investing in local labour where possible, job creation and the empowerment of staff members with skills additional to core vocational skills.

Suthu Consulting and Skills Development is also committed to strengthening the health, safety and environmental industry by contributing towards well-trained staff members. The company is also involved in selected community projects that share Suthu Consulting and Skills Development's philosophy and guiding principles.



Clientele

Our clientele includes small, medium and large enterprises across industries such as technology, healthcare, finance, manufacturing and more. We have successfully partnered with organizations of various sizes and complexities, delivering tangible results and driving positive change.





Thanks to **Ex-**
plore us.

Address

79c Carlswald Luxury Estate
81 Tambotie Road MIDRAND 1632

Phone

+2713 013 0453

Online

info@scasd.co.za
www.scasd.co.za